

Pilot Water Gas Shift – Membrane Device for Hydrogen from Coal

Tom Barton - Western Research Institute

5/13/11

DE-FE0004992

Project ID # **PD086**

Overview

Timeline

- Start - 10/1/10
- End - 12/31/11
- 45% complete

Budget

\$1,399,998 DOE share
\$350,349 Contractor share
2010 funding \$1,198,165
2011 funding \$201,833

Barriers

- Membrane Durability
- Membrane Flux
- Membrane Cost
- Manufacturability

Partners

- Western Research Institute
- Synkera Technologies
- Chart Energy and Chemicals

Objectives

Relevance: the program is designed to demonstrate separation of hydrogen from coal at pre-engineering / pilot scale

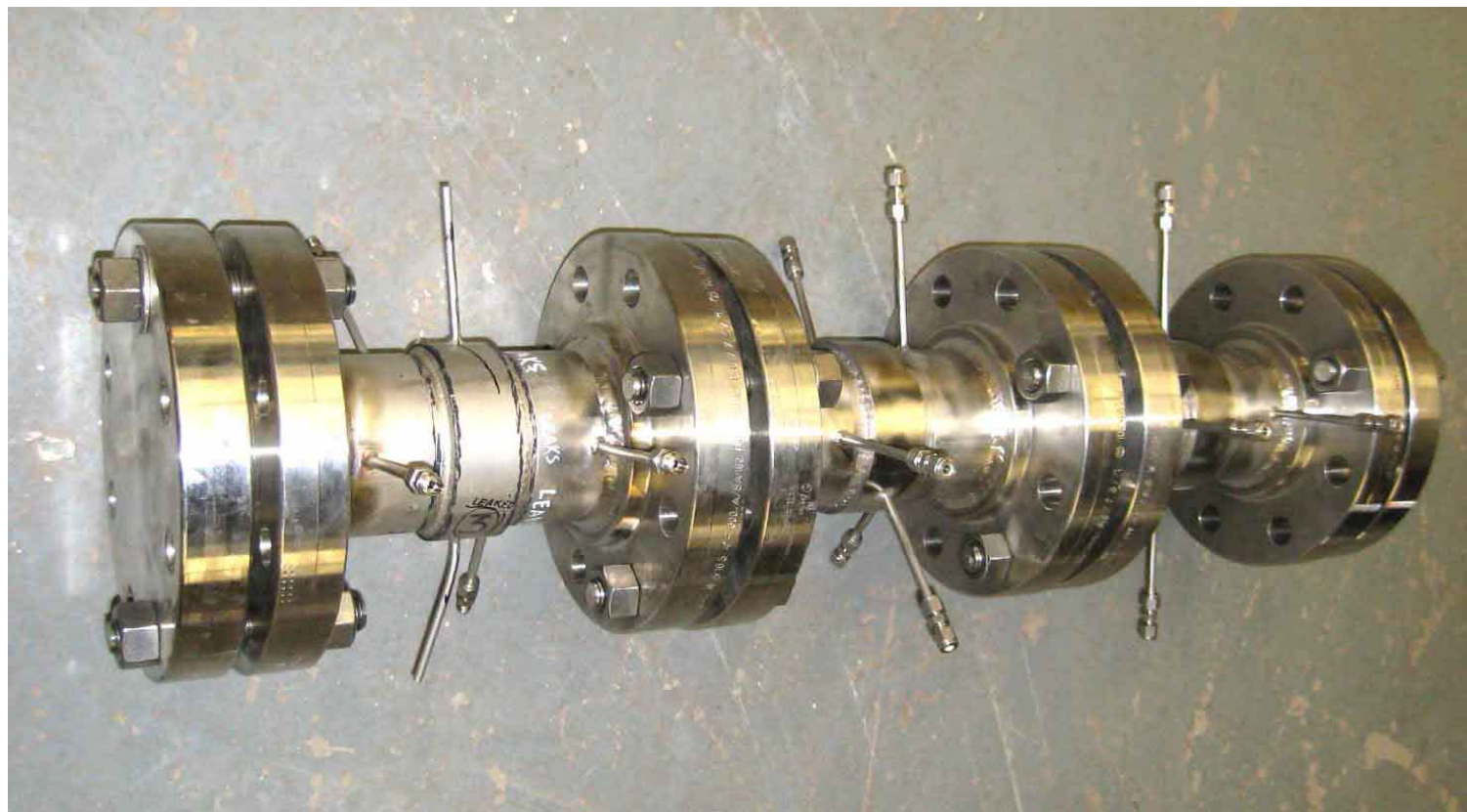
Phase I

- Produce a water gas shift – membrane device capable of 2 lbs/day hydrogen production.
- Test the device under NETL protocol conditions and using coal derived syngas.
- Demonstrate a modular fabrication suitable for larger scale.

Phase II and Phase III

- Scale the WGS – membrane device to 100 lbs/day hydrogen.
- Design a 4 ton/day hydrogen production unit.

Previous Membrane - WGS Reactor



Collaborations

- Western Research Institute, Laramie WY acts as the prime for the contract. WRI will conduct the WGS catalyst development and the testing of components and the final device.
- Chart Energy and Chemicals, La Crosse WI is the engineering design and manufacturing partner and will commercialize the device.
- Synkera Technologies, Longmont CO is the composite membrane developer.
- Funding from NETL DE-FE0004992 and the Wyoming Clean Coal Technology Fund



Heat Exchangers



Core in Kettle



Batteries

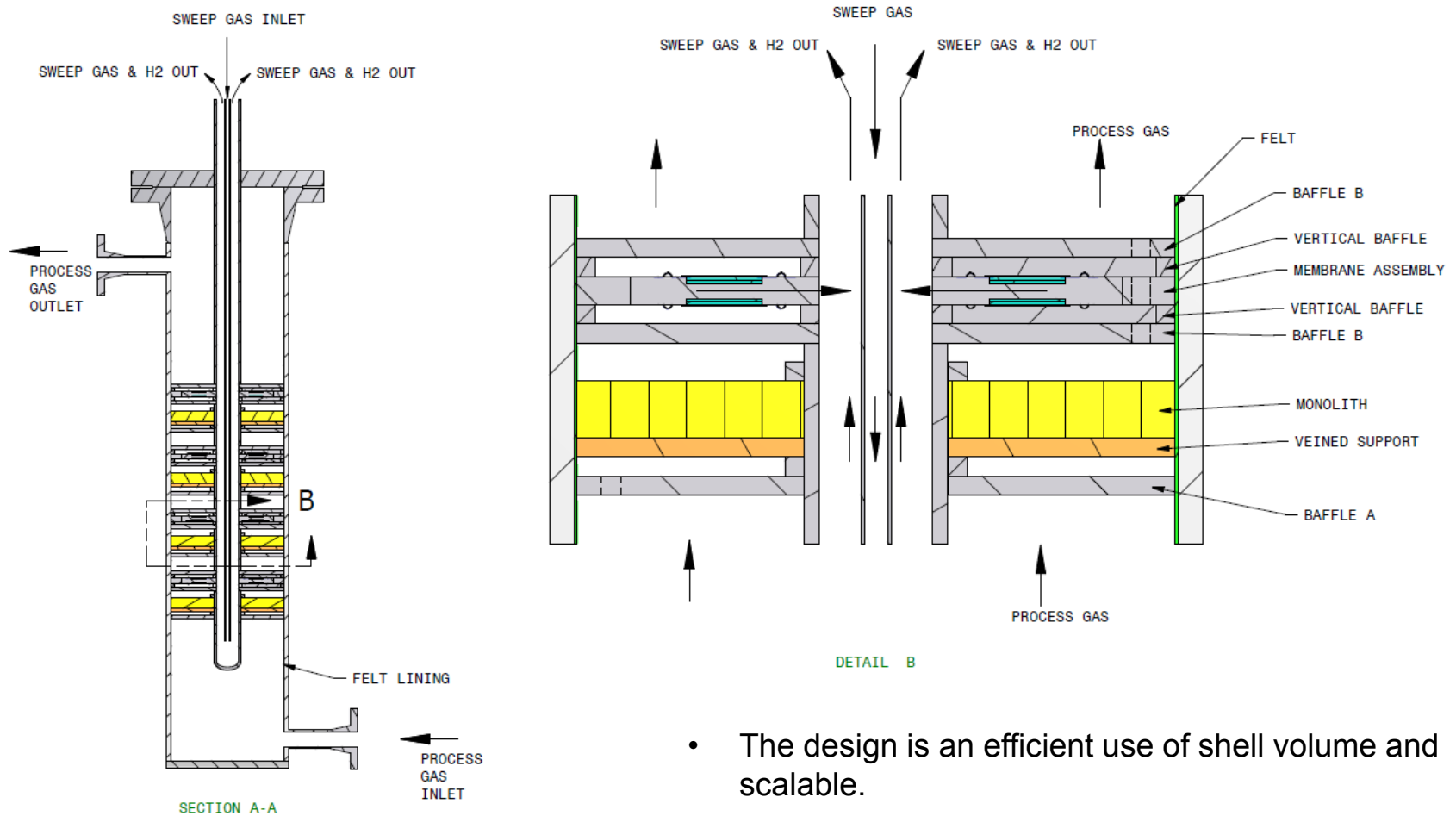


Cold boxes

Approach

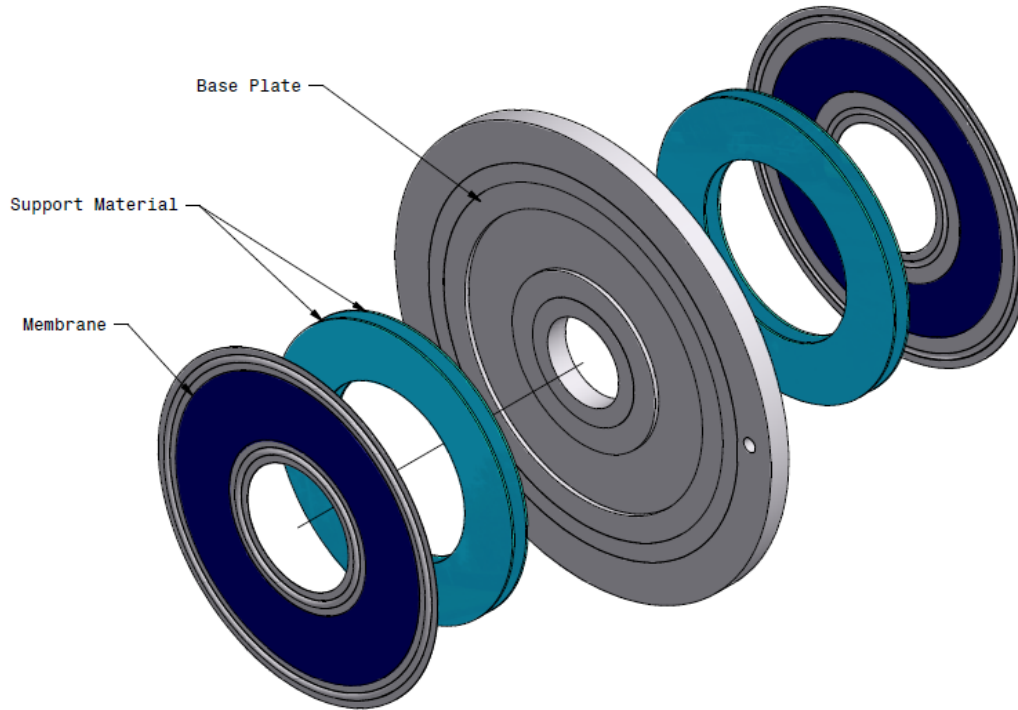
- **Task 2** **Reactor Engineering**
 - Reactor design
 - Device fabrication
- **Task 3** **Water Gas Shift Catalyst**
 - WGS composition
 - Monoliths versus extrusions
- **Task 4** **Membrane Development**
 - Membrane format
 - Palladium alloys
- **Task 5** **Device Testing**
 - NETL protocols
 - Coal gasifier

Concept Utilizing Donut Membrane Assembly

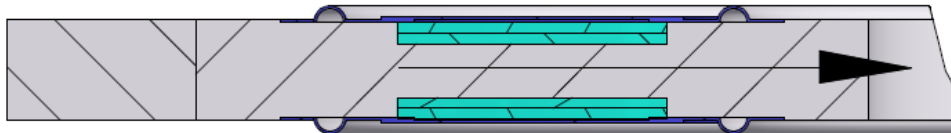


- The design is an efficient use of shell volume and scalable.
- The catalyst is in monolith form and process gas is directed across membrane by baffles.

Circular Separation Membrane Assembly



- The donut shaped membranes are attached to the base by laser welding.
- A porous support material behind the membrane allows hydrogen flow into the central collection area.
- Features formed into the rims of the membrane allow for thermal expansion and contraction.

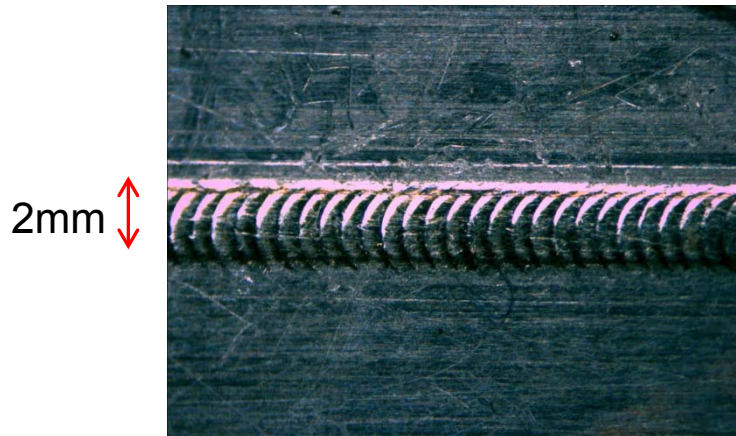


Manufacturing Development

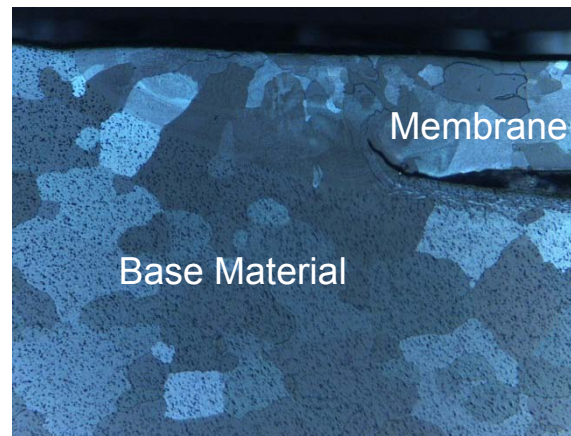


Energy & Chemicals, Inc.

- Several different joining technologies have been investigated:
 - Brazing, Welding, Bonding
- Chart is able to machine membrane and base materials to very tight tolerances to promote best joint formation.
- Laser welding has shown the best repeatability and joint integrity for Phase I reactors.

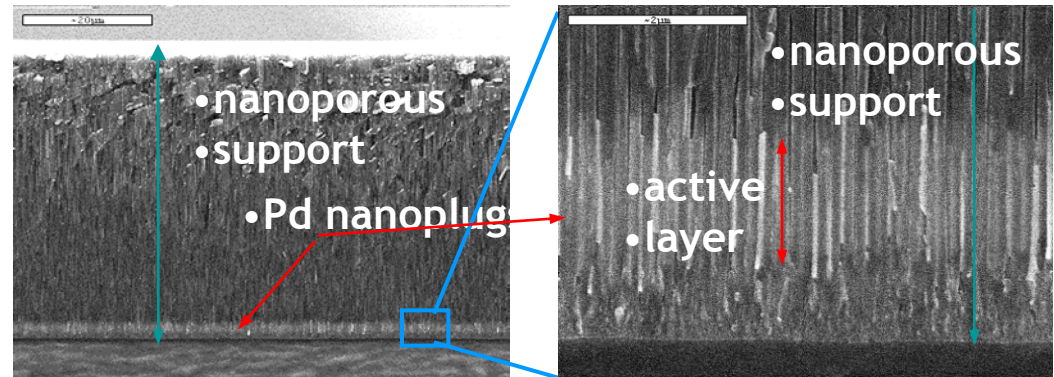
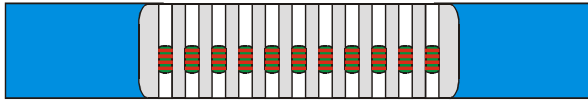


Weld bead at 20X magnification

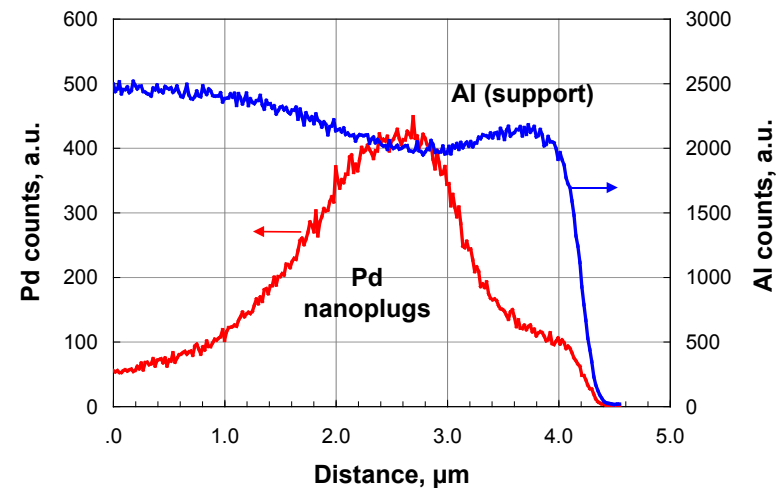


Weld cross-section at 50X
Continuous joint with minimal impact
to membrane material.

Membrane Structure



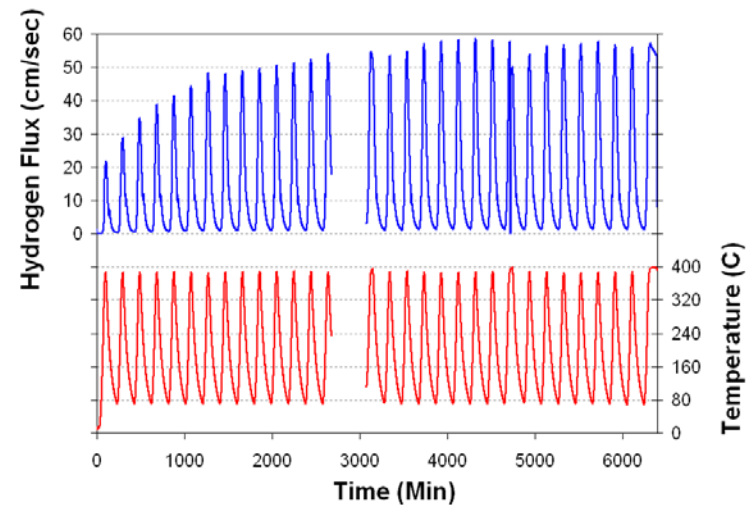
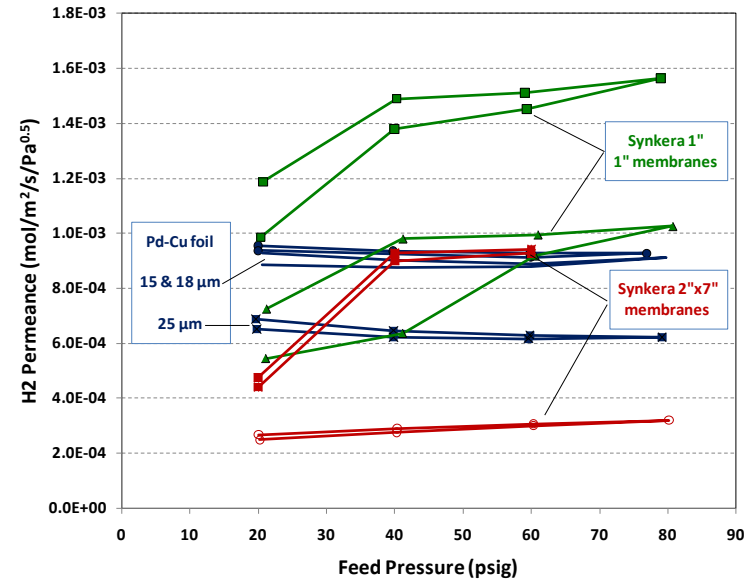
- Nanoporous ceramic support
 - Pore diameter 35-75 nm
 - Porosity 10-30% porosity
 - Thickness 50 to 200 μm
- Active layer of Pd-based nano-plugs
 - Plug diameter same as pore
 - Length from 0.25 to 2 μm
- Integrated onto Al rim



Elemental profile of the cross-section confirms localization of active layer.

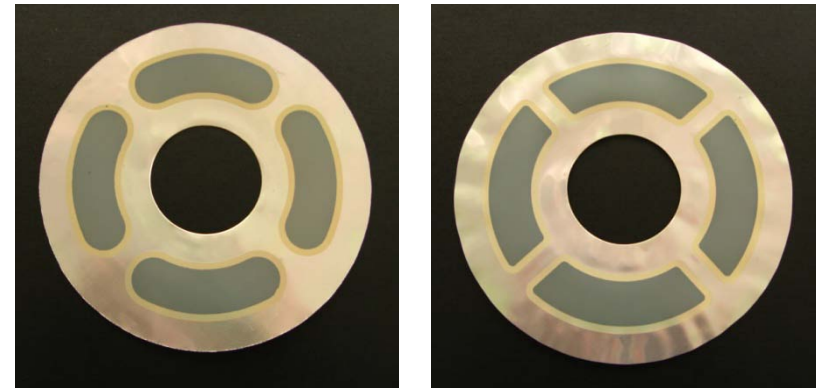
Membrane Performance

- Extensive testing performed to date with AAO \ Pd membranes.
 - Lab-sized (1”), scaled (2”x7”) membrane
 - Durable in broad T/P ranges
 - up to 500 psi and 500°C for 1” membranes
 - up to 300 psi and 450°C for scaled membranes
- Permeance (at 350-400°C)
 - Over $1.5 \times 10^{-3} \text{ mol/m}^2\text{sPa}^{0.5}$ for 1” (> 15 μm Pd-Cu foil)
 - Up to $1 \times 10^{-3} \text{ mol/m}^2\text{sPa}^{0.5}$ for scaled
 - Equivalent flux of 315 scfh/ft²
- Selectivity (H₂/Ar)
 - > 1000 (lab), >100 (scaled)
- Reliability
 - T cycling from ambient to 400°C in hydrogen
 - No degradation, no embrittlement

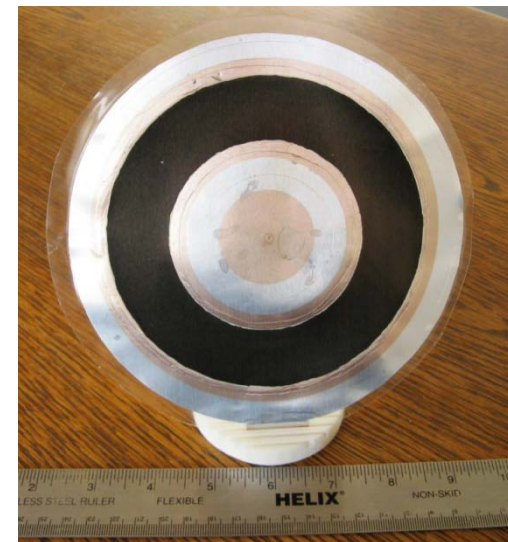


Membrane Fabrication

- Equipment and processes scaled
 - Anodization to form blank membrane
 - Electrodeposition to deposit active layer
- Scaled blank membranes
 - 6" donut shape with alternate designs
- Scaled composite membranes
 - Process for active layer deposition confirmed
 - For the first time, 6" membranes demonstrated
 - Fabrication of membranes for assembly into reactors for testing on schedule



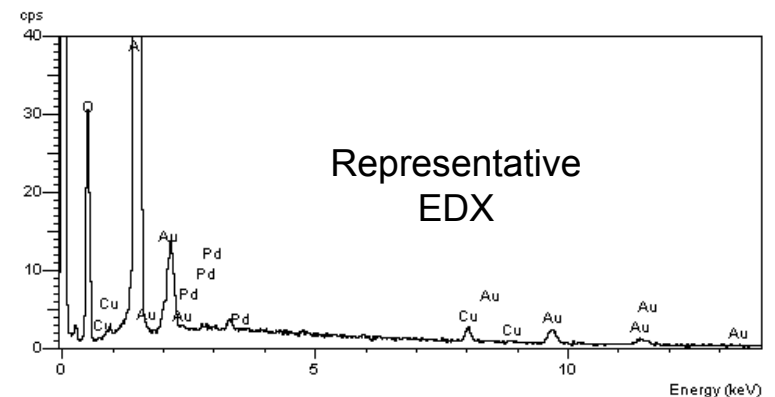
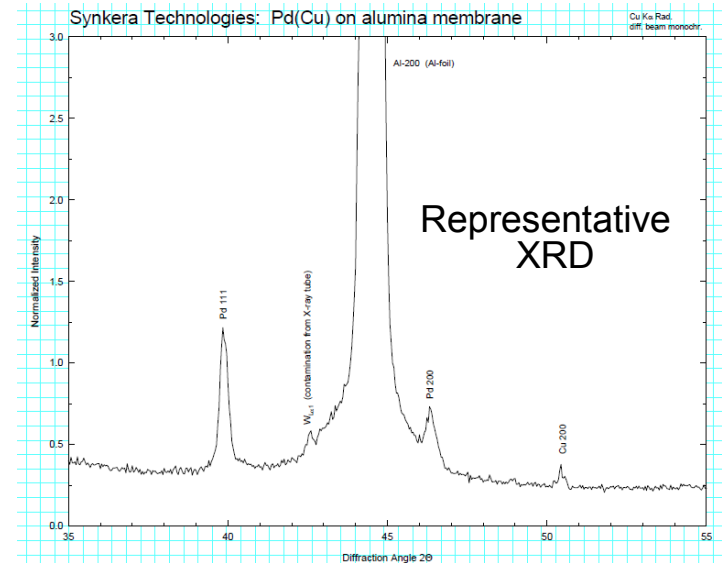
Alternative donut shaped membrane designs



6" OD scaled prototype of composite membranes

Pd-Cu Alloy Membranes

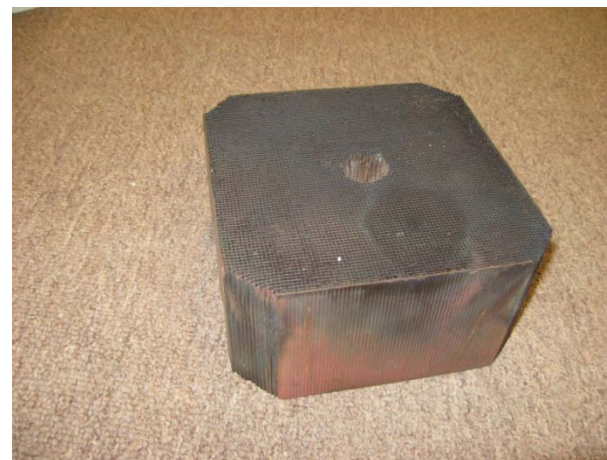
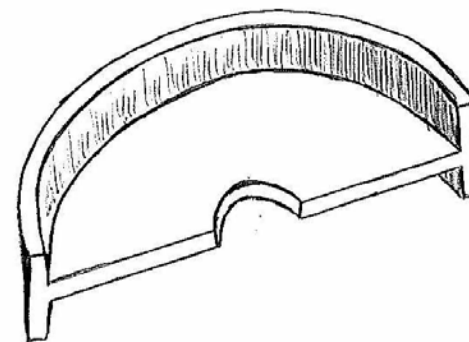
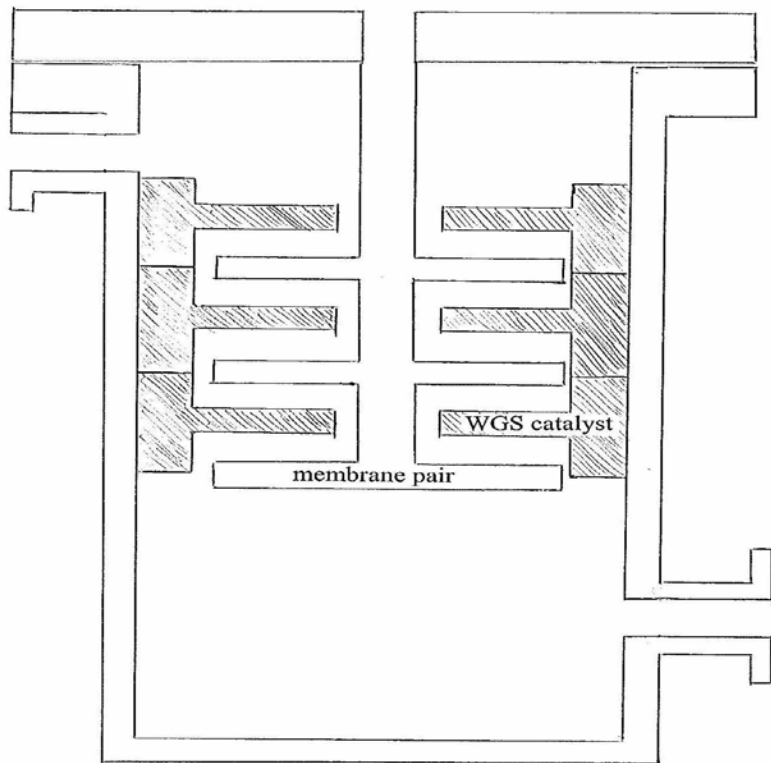
- Implement S-resistant Pd-40% Cu alloy in nanoporous composite architecture
- Electrolyte for Pd-Cu developed
- Feasibility of depositing Pd-Cu into the pores of AAO established
- Process development in progress to achieve target composition
 - 1" membranes used at this time
 - Characterization of Pd-Cu ratio by EDX and alloy phase by XRD
 - Testing for permeance and S-resistance
- Once validated, process will be transferred to 6" prototypes



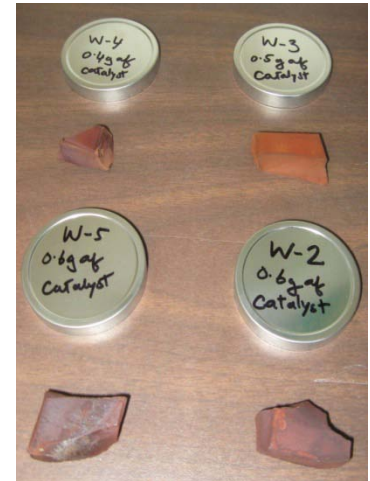
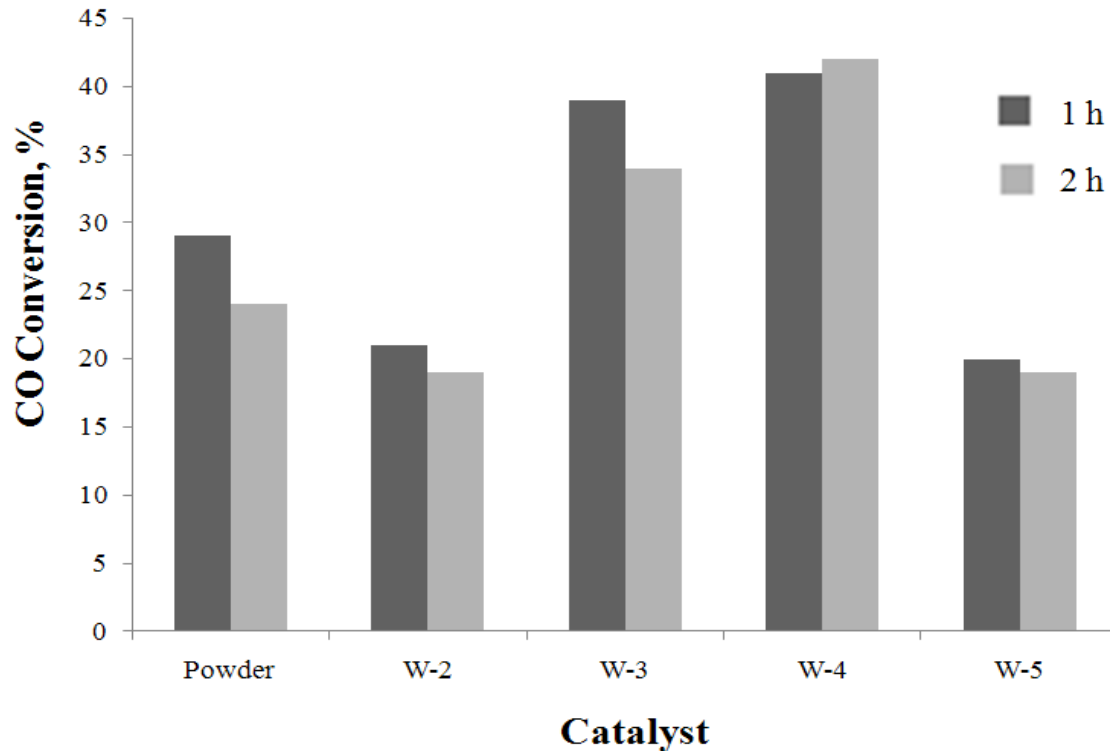
Structural Water Gas Shift Catalyst

- Internal volumes of the reactor are to be filled with formed water gas shift catalyst designed to direct flow around the membrane surfaces.
- The simultaneous hydrogen extraction and WG shift improves the efficiency of both processes.
- The two substrates under active consideration are extruded porous alumina structures and monolithic honeycomb fitted to portion of the internal volume.
- Ideally the catalyst to membrane surface area ratio would be on the order of 5:1.

Structural Water Gas Shift Catalyst Concepts



Preliminary WGS Test Data



The activity of powder and the deposited catalysts in water-gas-shift reaction. Reaction temperature, 400°C, weight of the catalyst, 0.6 g, CO flow rate, 30 mL/min, and water 0.05 mL/min.

WRI's 35 lb/hr Coal Gasifier



Future Work

Additional funding of \$1,100,000 has been awarded to the project team by the Wyoming Clean Coal Technology Fund. This budget will be used to expand the scope of Phase I efforts to include:

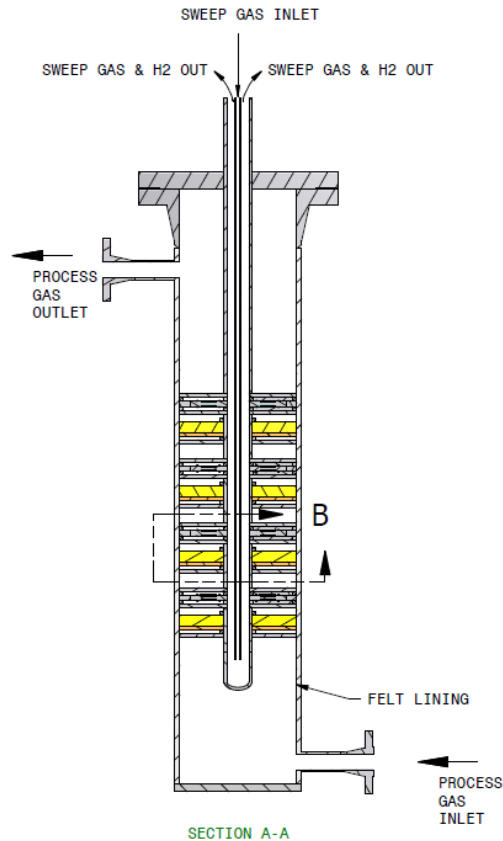
- additional catalyst development
- larger scale membranes
- higher pressure tests
- economics of hydrogen production
- preliminary Phase II scale design

The longer timeframe of this project will allow the team to transition to Phase II or, should Phase II not be awarded, to move towards commercialization.

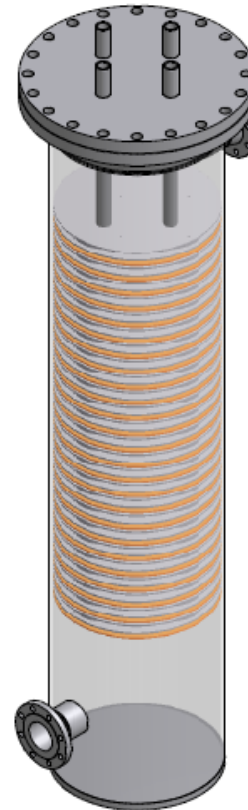
Future Reactor Scale up



Energy & Chemicals, Inc.



- 2 - 4 lb/day
- 4 modules shown
- Shell 36" long, 8.625" OD

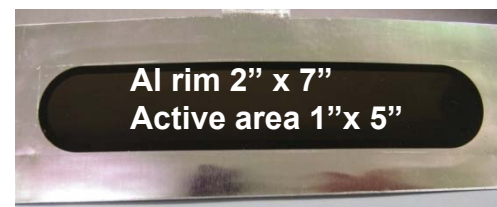


Schematics of devices
for 2 lb/day and 100
lb/day

- 100 lb/day
- 100 modules shown
- Shell 96" long, 22" OD

Membrane Scale-up Status

- Membranes for portable PEM FC (NSF project)
 - Material: pure Pd
 - Target output: 0.2-1.5 kg/day of H₂ per module
 - Membrane active area: 5-35 sq. in.
 - Gen-1 prototypes produced and tested
 - Modules developed and validated with partners
- Membranes for syngas streams (Phase I)
 - Material: Pd-40%wt Cu (in development)
 - Target output: 1 kg/day of H₂ per module
 - Membrane active area: 8-12 sq. in.
 - Gen-1 prototypes produced, testing in progress
- Membranes for industrial separation (Phase II)
 - Target output: 50-500 kg/day of H₂ per module
 - Membrane active area: 50-200 sq. in.
 - Blank 11"x18" membranes demonstrated
 - Initial plate-and-frame module design available



Additional WGS Catalyst Plans

- Increase catalyst stability and resistance to syngas impurities/poisons via inclusion of traps capable of regeneration.
- Further increase high temperature activity and stability to match increases in H₂ membrane performance.
- Examine surface coatings for additional water gas shift activity.

Emery Energy 10 ton/day Gasifier



Conclusions

- The 2 lb/day device is designed as a modular stainless steel pressure vessel containing both stacked hydrogen separation membranes and a structural water gas shift catalyst.
- The separation membranes are composite pieces using anodized alumina as a regular porous structure to hold thin palladium alloy plugs.
- The advantages of the composite membranes include the resistance to cracking, the presence of a joinable rim, and the small amount of palladium alloy required.
- The final palladium copper alloy will be chosen for sulfur resistance.
- The project is on schedule to produce and test the Phase I device under NETL protocols and coal derived syngas.

Project Summary

Approach:

The goal is to produce a 2 lb/day hydrogen device including design, reactor fabrication, catalyst development, membrane fabrication and testing under coal derived syngas.

Conclusions:

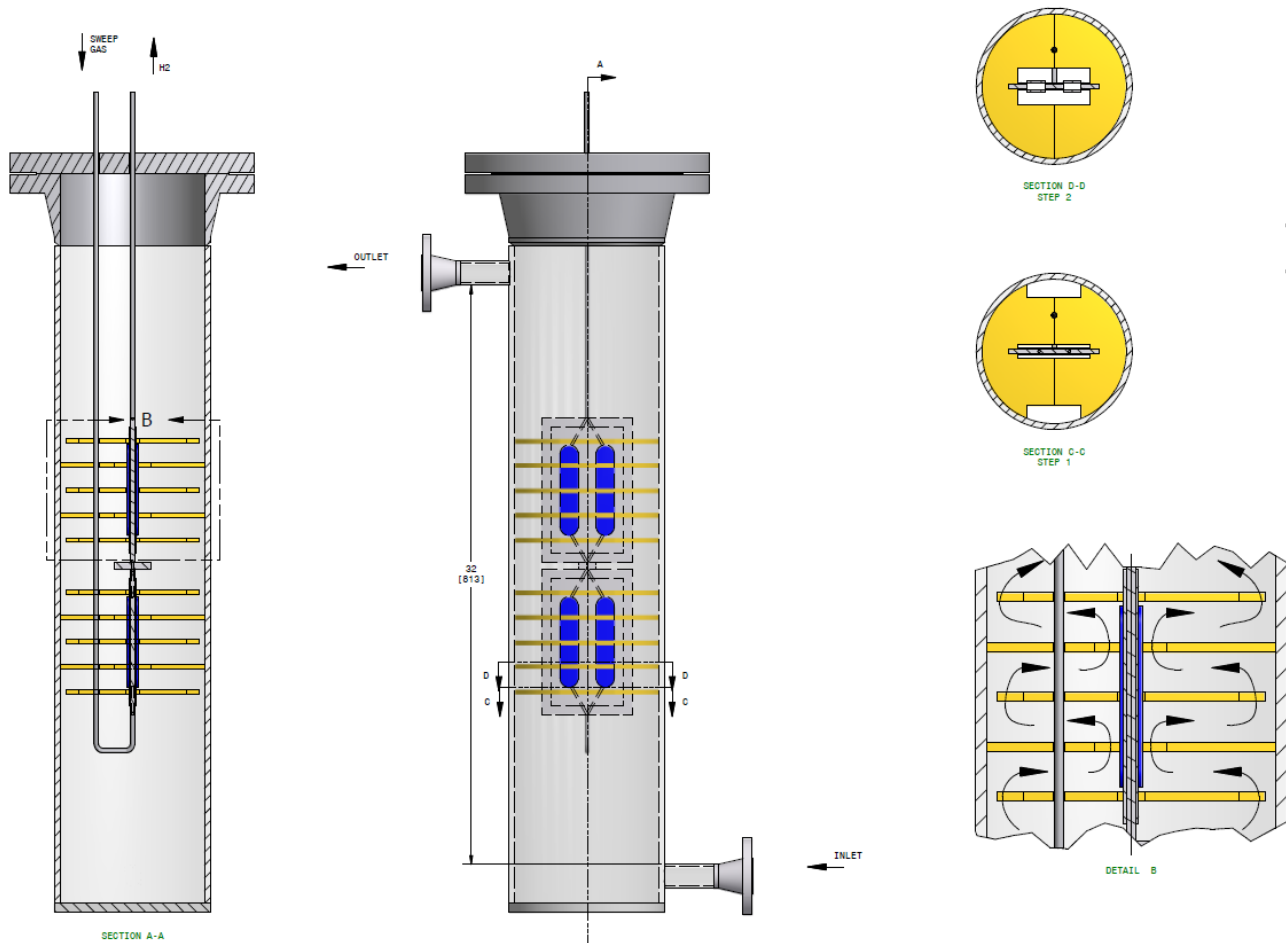
A stainless steel pressure vessel with stacked donut shaped composite membranes and ceramic WGS catalyst is under construction. The Phase I project is on schedule.

Future Work:

The team has been awarded additional non – DOE funding to expand and transition the project toward Phase II goals of a 100 lb/day hydrogen device.

Technical Backup Slides

Concept Utilizing Rectangular Membranes



This design integrates catalyst supports and uses catalyst structures to direct flow across the membrane surfaces.

WGS Catalyst Development Future Work

New methods of depositing the catalyst on the monoliths should involve a single step that deposits sufficient mass in the correct phase to maintain catalyst activity and stability. Single step liquid-phase impregnation is the most likely candidate. The research will focus on determining the optimum precursor chemicals and solvents that will permit sufficient solution concentration to deposit the required amount of catalyst.

The optimum thermal treatment and activation methods will be sought.

Methods for preventing pore mouth plugging will be developed, such as modifying the liquid-phase chemistry with addition of surfactants, as part of the catalyst loading and pretreatment methods.

Testing Facility at Synkera

- Planned upgrade of Synkera testing facility completed
- Gas flow/pressure control and measurements for high pressure
- Scaled furnace
- Appropriate venting
- Design of test module for scaled 6" membranes in progress
- Testing capabilities of scaled membranes at Synkera include:
 - T (<450°C) and P (<500 psi) ranges
 - Permeance and selectivity in simplified gas streams
 - S-resistance

